

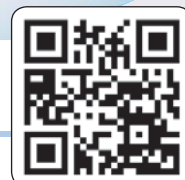


TECHNO-B
REFRIGERATION SYSTEMS

R290



MONOBLOCCHI COMMERCIALI ACCAVALLATI
COMMERCIAL STRADDLE-TYPE MONOBLOCK UNITS



TECHNO-B S.r.l.

via Cantelma, 11 • 42045 Codisotto di Luzzara (RE) • ITALY • Tel. +39-0522-978400 (4 r.a.) • Fax +39-0522-978362

info@technob.it • www.technob.it



TECHNO-B

REFRIGERATION SYSTEMS

MEDIA temperatura • MEDIUM temperature

R290

Potenza frigorifera • Refrigerating capacity (W) - Volume cella • Room volume (m³)



+5 ÷ -5°C



Temperatura cella • Cold room temperature

+ 5 °C

0 °C

- 5 °C



Temperatura esterna • Ambient temperature

+ 32 °C

+ 43 °C

+ 32 °C

+ 43 °C

+ 32 °C

+ 43 °C

Modello	Forma Form	+ 32 °C		+ 43 °C		+ 32 °C		+ 43 °C		+ 32 °C		+ 43 °C	
		W	m ³	W	m ³	W	m ³	W	m ³	W	m ³	W	m ³
ATN050U	1	1155	10	996	7	1093	7	920	5	952	5	809	4
ATN075U	1	1432	13	1224	10	1230	9	1082	7	1068	6	923	5
ATN100U	1	2028	20	1708	16	1762	14	1563	11	1553	10	1316	8
ATN150U	2	3094	36	2632	28	2507	24	2352	20	2432	18	1928	14
ATN200U	2	3760	42	3240	35	3480	34	2867	24	2961	24	2504	18

BASSA temperatura • LOW temperature

R290

Potenza frigorifera • Refrigerating capacity (W) - Volume cella • Room volume (m³)



-15 ÷ -25°C



Temperatura cella • Cold room temperature

- 15 °C

- 20 °C

- 25 °C



Temperatura esterna • Ambient temperature

+ 32 °C

+ 43 °C

+ 32 °C

+ 43 °C

+ 32 °C

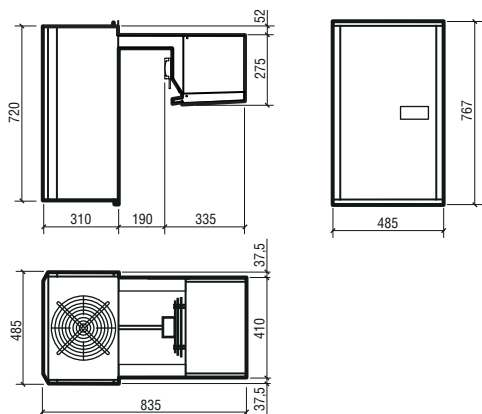
+ 43 °C

Modello	Forma Form	+ 32 °C		+ 43 °C		+ 32 °C		+ 43 °C		+ 32 °C		+ 43 °C	
		W	m ³	W	m ³	W	m ³	W	m ³	W	m ³	W	m ³
ATB120U	1	1106	9	951	6	872	5	790	3	711	3	623	2
ATB170U	1	1250	12	1029	9	1030	7	926	5	859	5	773	4
ATB202U	2	2041	28	1935	24	1774	17	1589	14	1462	11	1340	9
ATB203U	2	2592	41	2193	34	2126	25	1912	20	1621	14	1513	12

FORMA • FORM 1



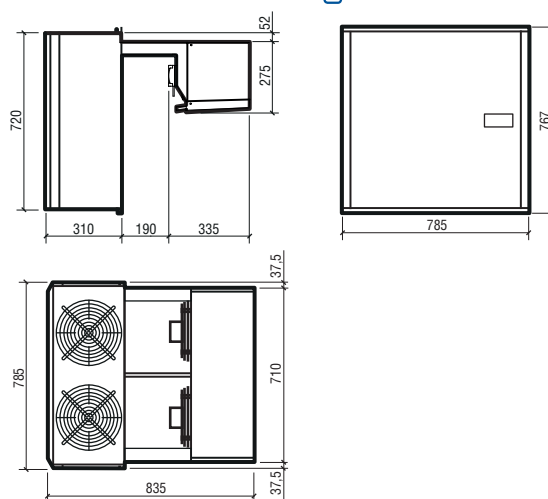
mm



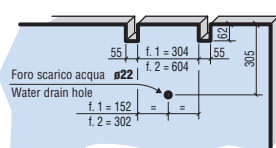
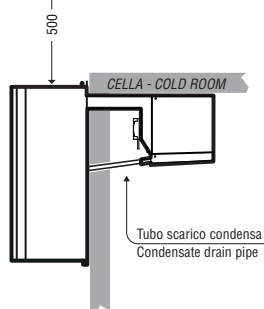
FORMA • FORM 2



mm



SOFFITTO MAGAZZINO - WAREHOUSE CEILING



MONTAGGIO
MOUNTING 1-2

MONITORAGGIO E CONTROLLO REMOTO
REMOTE MONITORING SYSTEM



DATI tecnici

technical DATA

TN

MEDIA temperatura
MEDIUM temperature

Temperatura cella • Cold room temperature



+5 ÷ -5°C

Tipo di sbrinamento **A gas caldo** • Defrost type **By hot gas**

R290

DATI TECNICI UNITA' • TECHNICAL DATA UNIT

	Forma Form	Tensione Voltage	Massimo assorb. elettrico in marcia Max. elec. absorp. in running condition kW	Tipo compressore Compressor type	Volume spostato Displacement		Assorbimento in sbrinamento Absorption during defrost kW
		V/ph/Hz			m ³ /h - 50Hz	m ³ /h - 60Hz	
ATN050U	1	230/1/50	0,68	E	2,8	2,7	0,72
ATN075U	1	230/1/50	0,8	E	3,15	3,17	0,82
ATN100U	1	230/1/50	1,01	E	3,78	3,82	1,2
ATN150U	2	230/1/50	1,6	2 x E	2 x 3,15	2 x 3,17	1,64
ATN200U	2	230/1/50	2,05	2 x E	2 x 3,78	2 x 3,82	2,4

E = Ermetico • Hermetic

Refrigerant quantity: maximum 150g. / circuit

DATI tecnici

technical DATA

TB

BASSA temperatura
LOW temperature

Temperatura cella • Cold room temperature



-15 ÷ -25°C

Tipo di sbrinamento **A gas caldo** • Defrost type **By hot gas**

R290

DATI TECNICI UNITA' • TECHNICAL DATA UNIT

	Forma Form	Tensione Voltage	Massimo assorb. elettrico in marcia Max. elec. absorp. in running condition kW	Tipo compressore Compressor type	Volume spostato Displacement		Assorbimento in sbrinamento Absorption during defrost kW
		V/ph/Hz			m ³ /h - 50Hz	m ³ /h - 60Hz	
ATB120U	1	230/1/50	0,82	E	4,93	4,6	0,9
ATB170U	1	230/1/50	1,03	E	5,99	5,46	1,2
ATB202U	2	230/1/50	1,64	2 x E	2 x 4,93	2 x 4,6	1,8
ATB203U	2	230/1/50	2,1	2 x E	2 x 5,99	2 x 5,46	2,4

E = Ermetico • Hermetic

Refrigerant quantity: maximum 150g. / circuit



TECHNO-B

REFRIGERATION SYSTEMS

TECHNO-B S.r.l.

via Cantelma, 11 • 42045 Codisotto di Luzzara (RE) • ITALY • Tel. +39-0522-978400 (4 r.a.) • Fax +39-0522-978362

info@technob.it • www.technob.it