

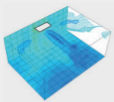
3D Flow Cassette



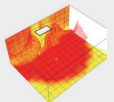
3 Air Outlet Ports can be controlled individually

Using the "Comfortable airflow setting" function allows the left and right air outlet ports and the wide center air outlet ports to automatically create a comfortable space for improved comfort.

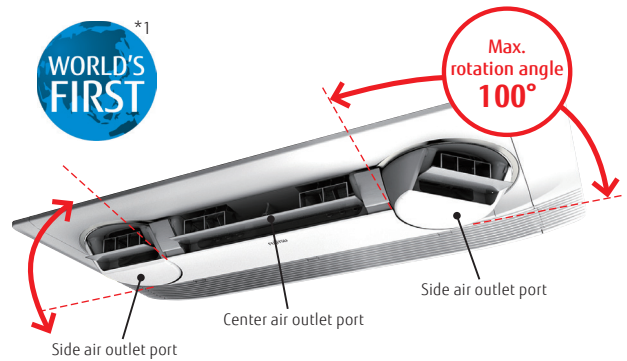
Temperature distribution during cooling and heating (when set to comfortable airflow)



Cooling: When cooling operation is stable with an outside air temperature of 35°C, a set temperature of 18°C and an air volume set to "Hi" in a 40m² environmental our test room for the AUXS024GLEH



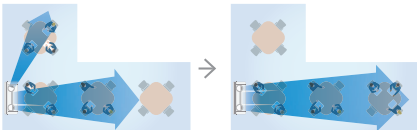
Heating: When heating operation is stable with an outside air temperature of 7°C, a set temperature of 30°C and an air volume set to "Hi" in a 40m² environmental our test room for the AUXS024GLEH



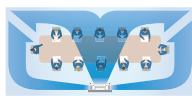
*1: Announced 2018. In room air conditioner for the home (our company's investigation)

Individual airflow setting

Equipped with an "Individual airflow setting" function that optimizes the airflow setting in accordance with the installation location.



Suitably setting the side air outlet ports to match how the space is used achieves air conditioning with no waste.



Optimum airflow control for improved comfort is achieved even for long rooms.



Wired Remote Controller (Touch Panel)
UTY-RNRYZ3

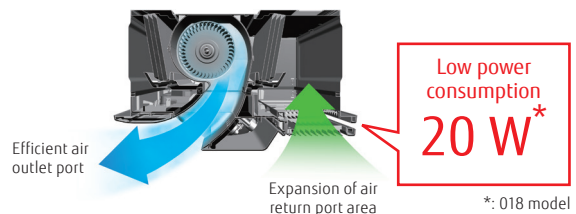
Individual air outlet port control

"Individual airflow setting" is possible using the Wired Remote Controller (Touch Panel)*. The airflow of the respective air outlet ports can be individually set.

*Wired Remote Controller (Touch Panel) UTY-RNRYZ3 only

High Energy Saving

The "New structural design" featuring large intake and smooth output reduces air blowing loss to achieve top class energy saving.



Low power consumption
20 W*

*: 018 model



Specifications

Model name			AUXS018GLEH	AUXS024GLEH
Power source			Single phase, ~230V, 50Hz	
Capacity	Cooling	kW	5.60	7.10
	Heating		6.30	8.00
Input power		W	20/28	34/43
Airflow rate*	High	m³/h	750/870	950/1,040
	Med-H		710/830	890/990
	Med		690/780	860/930
	Med-L		660/740	810/880
	Low		630/700	770/840
	Quiet		540/540	540/540
Sound pressure level*	High	dB(A)	38/41	43/46
	Med-H		36/40	42/45
	Med		35/39	41/43
	Med-L		35/37	40/42
	Low		33/36	38/40
	Quiet		29/29	29/29
Net Dimensions (H × W × D)		mm	200 × 1,240 × 500	
Weight		kg(lbs)	25 (55)	
Connection pipe diameter	Liquid (Flare)	mm	6.35	
	Gas (Flare)		12.70	
Drain hose diameter (I.D./O.D.)			25/32	
Cassette Grille	Model name		UTG-USYA-W	
	Net Dimensions (H×W×D)	mm	85 × 1,350 × 580	
Weight		kg(lbs)	11.5 (25)	

Note : Specifications are based on the following conditions.
 Cooling : Indoor temperature of 27°CDB / 19°CWB, and outdoor temperature of 35°CDB / 24°CWB.
 Heating : Indoor temperature of 20°CDB / (15°CWB), and outdoor temperature of 7°CDB / 6°CWB.
 Pipe length : 7.5 m; Height difference between outdoor unit and indoor unit : 0 m. Voltage : 230 [V].
 *: This value is "cooling operation / heating operation".

Optional parts

- Wireless LAN Interface: UTY-TFSXZ1
- IR Receiver Unit: UTY-TRHX
- Cassette Grille: UTG-USYA-W
- External Power Supply Unit: UTZ-GXXA

Dimensions

(Unit : mm)

