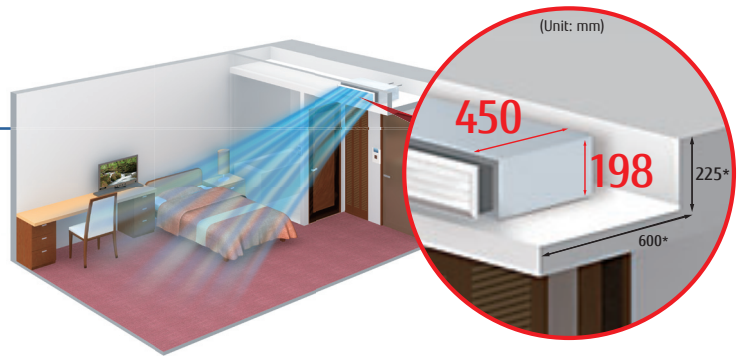


Low Static Pressure Duct Mini Duct (With drain pump)



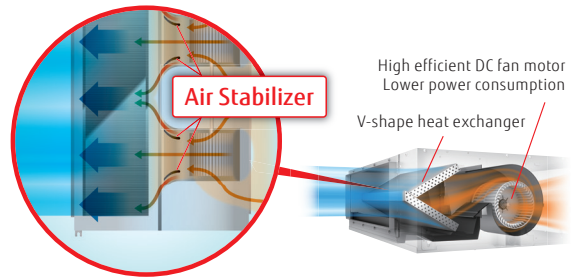
Large living space available

- Installation space can be reduced down to minimum depth 450mm height 198 mm and compact design
- Minimum size: Depth 450mm, Height 198mm
Volume 30% down compared with current model
- Lightweight: 16kg 10%down

*: Minimum installation dimension

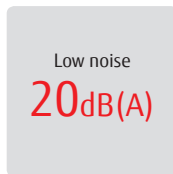
Optimum airflow path and low noise operation

Low noise is realized drastically by stabilized airflow design

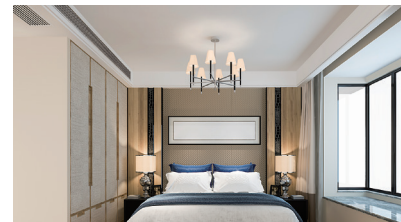
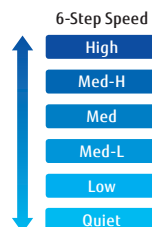


6-speed control*

Multistep airflow speed control allows this model to install in a quiet location.



at 04 model



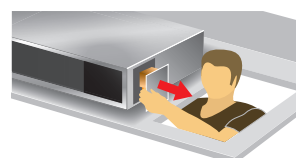
* Compatible Remote Controller is as follows:
UTY-RNRYZ3/UTY-RLRY/UTY-RSRV/UTY-RHRY/UTY-DCGYZ1/UTY-DTGZ1/UTY-ALGXZ1/UTY-APGXZ1

Easy design and maintenance for drain

By using the DC fan motor, it is possible to change the static pressure range from 0 to 50 Pa*.

The change of static pressure range is possible by remote controller.

*: 0 to 30 Pa. (004-012 models)



Built-in drain pump as standard :

Maintenance is easy

Parts can be replaced from the side of the unit where maintenance is easier

