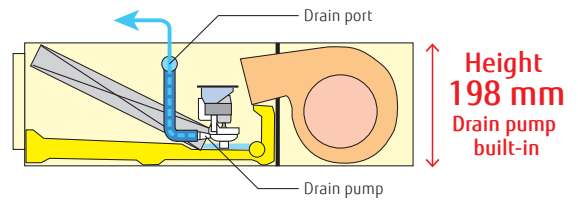


Low Static Pressure Duct Slim Duct / Slim Concealed Floor



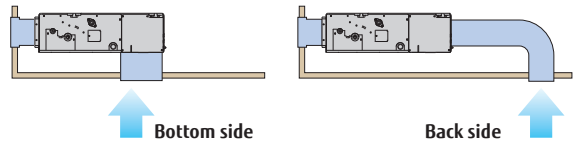
Slim design

With a slim design, this indoor unit can be installed in narrow ceiling spaces.



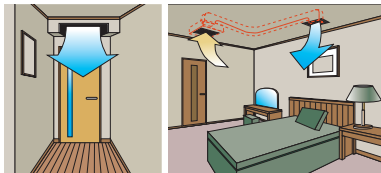
Air-intake

Air intake direction can be selected to match the installation site.

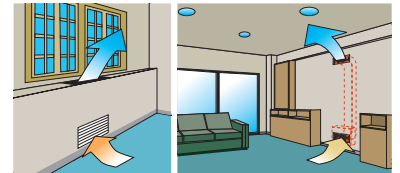


Flexible installation

Ceiling concealed



Floor concealed



Selectable with a wide range of static pressure

By using DC fan motor, it is possible to change the static pressure range from 0 to 90Pa. The change of static pressure range is possible by remote controller.

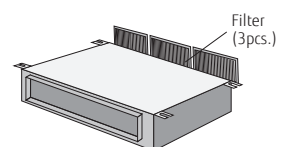
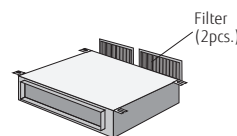


Static pressure range
0 to 90Pa

*024 model is 0 to 50Pa

Filter (Accessory)

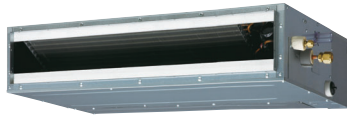
ARXD04/007/009/012/014/018 ARXD024



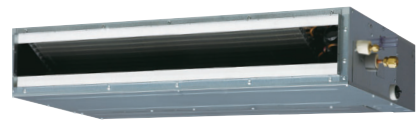
**Model : ARXD04GALH / ARXD007GLEH / ARXD009GLEH
ARXD012GLEH / ARXD014GLEH / ARXD018GLEH
ARXD024GLEH**



ARXD04GALH
ARXD007/009/012/014GLEH



ARXD018GLEH



ARXD024GLEH

Slim
Concealed
Floor



Specifications

Model name			ARXD04GALH*	ARXD007GLEH	ARXD009GLEH	ARXD012GLEH	ARXD014GLEH	ARXD018GLEH	ARXD024GLEH	
Power source			Single phase, ~230V, 50Hz							
Capacity	Cooling	kW	1.1	2.2	2.8	3.6	4.5	5.6	7.1	
	Heating		1.3	2.8	3.2	4.0	5.0	6.3	8.0	
Input power			W	40	44	50	54	92	83	122
Airflow rate	High	m ³ /h	510	550	600	600	800	940	1,330	
	Med-H		-	480	510	530	680	820	1,140	
	Med		400/470* ¹	440	460	490	600	730	1,020	
	Med-L		-	410	420	450	520	630	900	
	Low		320/440* ¹	370	370	410	440	540	780	
	Quiet		-	320	320	340	340	470	610	
Static pressure range			Pa	0 to 90	0 to 90	0 to 90	0 to 90	0 to 90	0 to 90	0 to 50
Standard static pressure				25	25	25	25	25	25	25
Sound pressure level	High	dB(A)	26	28	29	30	34	34	35	
	Med-H		-	26	27	28	32	31	31	
	Med		21/25* ¹	25	25	27	30	29	29	
	Med-L		-	24	24	26	28	27	27	
	Low		20/22* ¹	22	22	24	25	25	24	
	Quiet		-	21	21	22	22	23	21	
Net Dimensions (H × W × D)			mm	198 × 700 × 620	198 × 700 × 620	198 × 700 × 620	198 × 700 × 620	198 × 900 × 620	198 × 1,100 × 620	
Weight			kg(lbs)	17 (37)	17 (37)	17 (37)	18 (40)	22 (48)	26 (57)	
Connection pipe diameter	Liquid (Flare)	mm	6.35	6.35	6.35	6.35	6.35	6.35	9.52	
	Gas (Flare)		12.70	9.52	9.52	12.70	12.70	12.70	15.88	
Drain hose diameter (I.D./O.D.)						25/32				

Note : Specifications are based on the following conditions.

Cooling : Indoor temperature of 27°CDB / 19°CWB, and outdoor temperature of 35°CDB / 24°CWB.

Heating : Indoor temperature of 20°CDB / (15°CWB), and outdoor temperature of 7°CDB / 6°CWB.

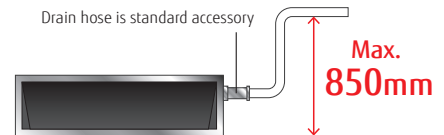
Pipe length : 7.5 m; Height difference between outdoor unit and indoor unit : 0 m. Voltage : 230 [V].

*1: This value is under cooling operation.

*:ARXD04GALH cannot be connected to J-IVS / J-IV / J-IVL / VR-IV Series.

Optional parts

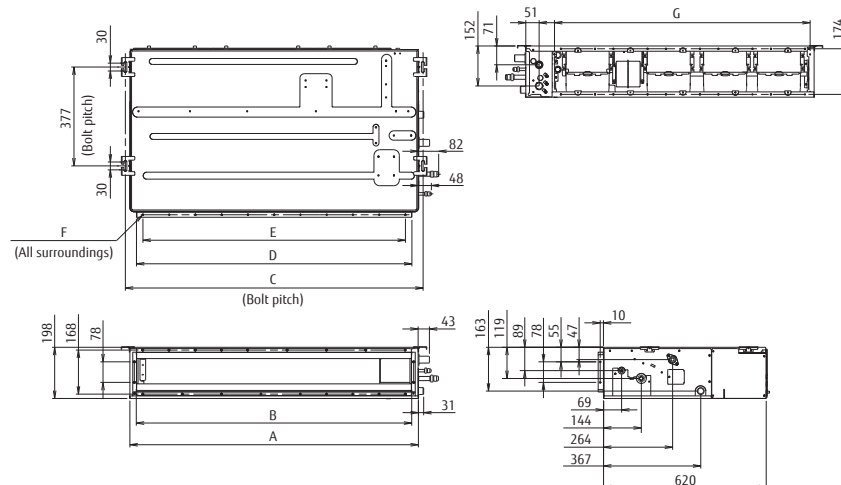
Remote Sensor Unit :	UTY-XSZX	Auto Louver Grille Kit: UTD-GXTA-W (04/007/009/012/014)
IR Receiver Unit :	UTB-YWC (004)	UTD-GXTB-W (018)
	UTY-TRHX (007/009/012/014/018/024)	UTD-GXTC-W (024)
External Power Supply Unit :	UTZ-GXXA	



Dimensions

(Unit : mm)

*Service accessibility must be allowed for when installing the product.
Please consult the installation manual for the necessary service access size.



	ARXD04-014	ARXD018	ARXD024
A	700	900	1100
B	650	850	1050
C	734	934	1134
D	650	850	1050
E	P100×6=600	P100×8=800	P100×10=1000
F	18×Ø5	22×Ø5	26×Ø5
G	574	774	974