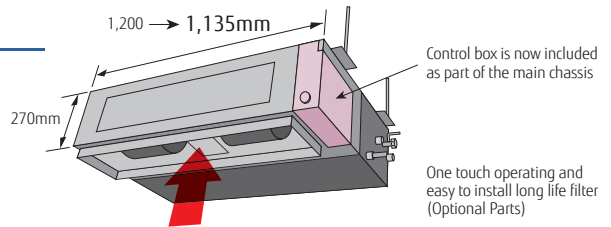


Medium Static Pressure Duct Normal



Slim & Compact design

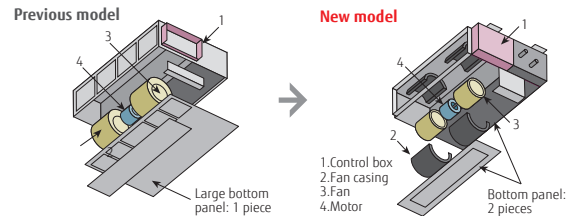
The slim and compact design of the indoor unit, with the control box mounted on the side of the unit, allows installation in narrow spaces.



Easy maintenance

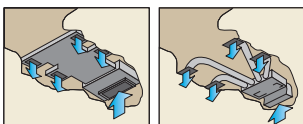
Structural improvement has been developed by making the bottom panel two pieces, front and rear. The internal fan casing is also manufactured in two pieces, namely upper and lower. The maintenance of the motor and fan can be easily carried out by removing the rear panel and the lower part of the casing while leaving the main chassis installed.

See below for the case of rear suction type

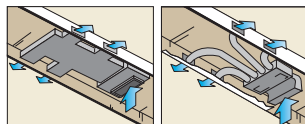


Installation styles

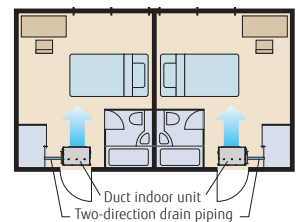
Embedded in Ceiling



Hanging from Ceiling

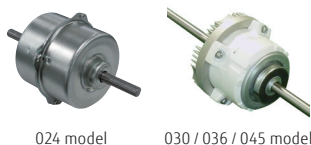


Two-direction drain piping



Low energy consumption by high efficiency DC fan motor

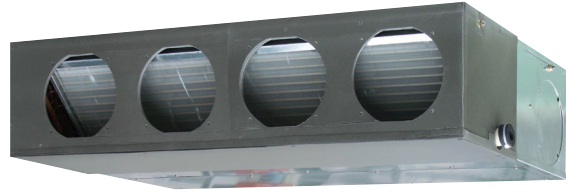
Improved motor efficiency from previous model.



Selectable with a wide range of static pressure

It is possible to change of static pressure range 0 to 150Pa.

Static pressure range
0 to 150Pa



Specifications

Model name		ARXA024GLEH	ARXA030GLEH	ARXA036GLEH	ARXA045GLEH
Power source		Single phase, ~230V, 50Hz			
Capacity	Cooling	7.1	9.0	11.2	12.5
	Heating	8.0	10.0	12.5	14.0
Input power	W	94	108	194	240
Airflow rate	High	1,280	1,410	1,840	1,970
	Med-H	1,180	1,350	1,750	1,910
	Med	1,090	1,280	1,660	1,860
	Med-L	1,000	1,240	1,600	1,780
	Low	920	1,190	1,530	1,710
	Quiet	840	1,150	1,470	1,640
Static pressure range	Pa	0 to 150	0 to 150	0 to 150	0 to 150
Standard static pressure		40	50	50	60
Sound pressure level	High	31	34	37	41
	Med-H	29	33	36	40
	Med	27	32	35	38
	Med-L	26	31	35	38
	Low	24	30	34	37
	Quiet	23	29	33	36
Net Dimensions (H × W × D)	mm	270 × 1,135 × 700	270 × 1,135 × 700	270 × 1,135 × 700	270 × 1,135 × 700
Weight	kg (lbs)	36 (79)	40 (88)	40 (88)	40 (88)
Connection pipe diameter	Liquid (Flare)	9.52	9.52	9.52	9.52
	Gas (Flare)	15.88	15.88	15.88	15.88
Drain hose diameter (I.D./O.D.)		25/32			

Note : Specifications are based on the following conditions.
 Cooling : Indoor temperature of 27°CDB / 19°CWB, and outdoor temperature of 35°CDB / 24°CWB.
 Heating : Indoor temperature of 20°CDB / (15°CWB), and outdoor temperature of 7°CDB / 6°CWB.
 Pipe length : 7.5 m; Height difference between outdoor unit and indoor unit : 0 m. Voltage : 230 [V].

Optional parts

Long Life Filter : UTD-LF25NA IR Receiver Unit : UTY-TRHX
 Flange (Square) : UTD-SF045T Drain Pump Unit : UTZ-PX1NBA
 Flange (Round) : UTD-RF204 Wireless LAN Interface : UTY-TFSXZ1
 External Power Supply Unit : UTZ-GXXA

Dimensions

(Unit : mm)

*Service accessibility must be allowed for when installing the product.
 Please consult the installation manual for the necessary service access size.

